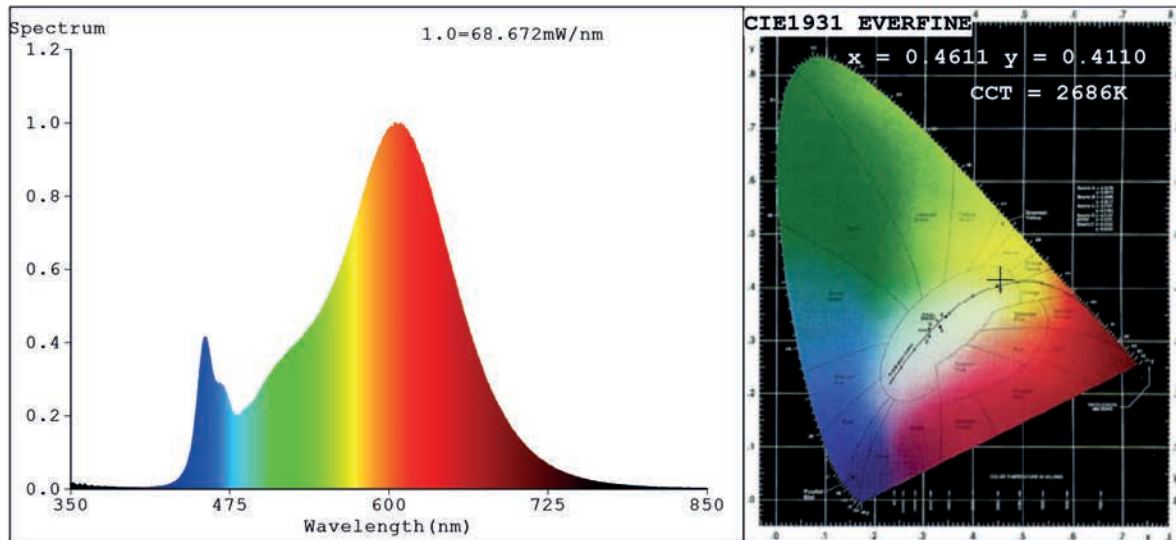


## Spectrum Test Report



### Color Parameters:

Chromaticity Coordinate:  $x=0.4611$   $y=0.4110$   $u'=0.2631$   $v'=0.5277$   
 CCT=2686K(Duv=0.0001) Dominant WL:Ld =584.3nm Purity=61.8%  
 Ratio:R=25.4% G=72.0% B=2.6%;;Peak WL:Lp=604.2nm FWHM=108.9nm  
 Render Index:Ra=82.2 CRI=77.8 TM30:Rf=81 Rg=93  
 R1 =82 R2 =94 R3 =91 R4 =79 R5 =82 R6 =94 R7 =79  
 R8 =55 R9 =6 R10=88 R11=79 R12=77 R13=85 R14=96 R15=73

### Photo Parameters:

Flux = 3053 lm Eff. : 143.51 lm/W Fe = 9.416 W

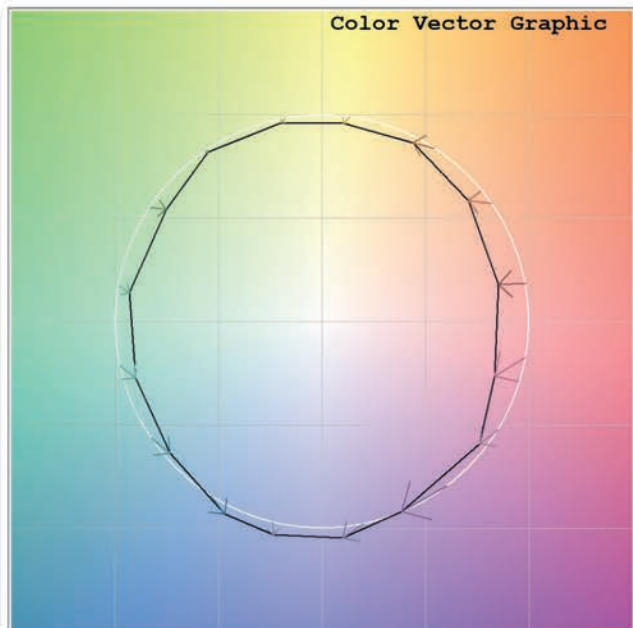
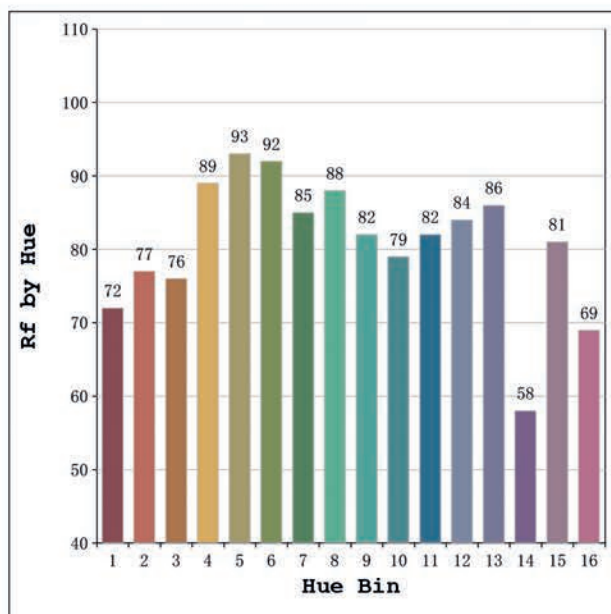
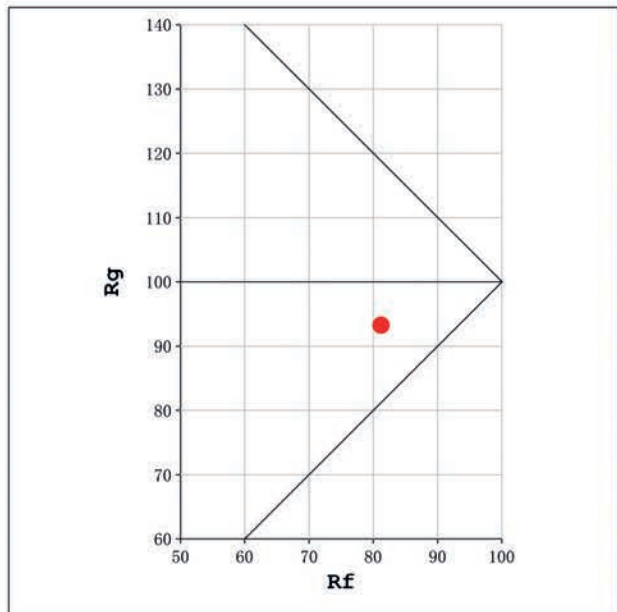
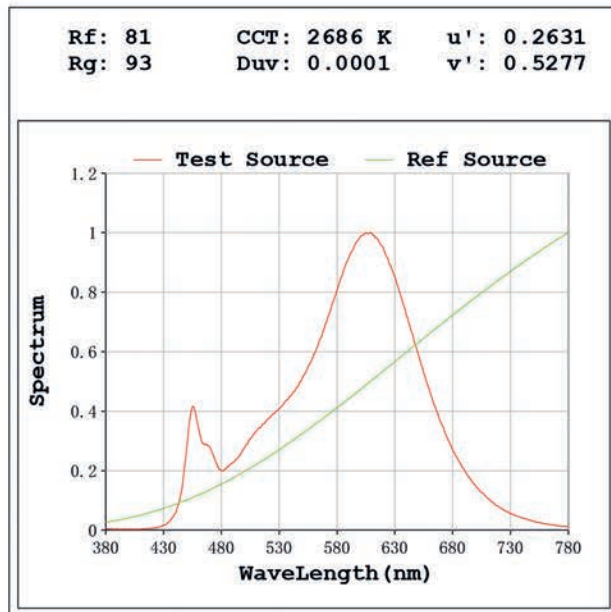
### Electrical parameters:

V = 23.998 V I = 0.8866 A P = 21.28 W PF = 1.000

Status: Integral T = 276 ms Ip = 37282 (57%)

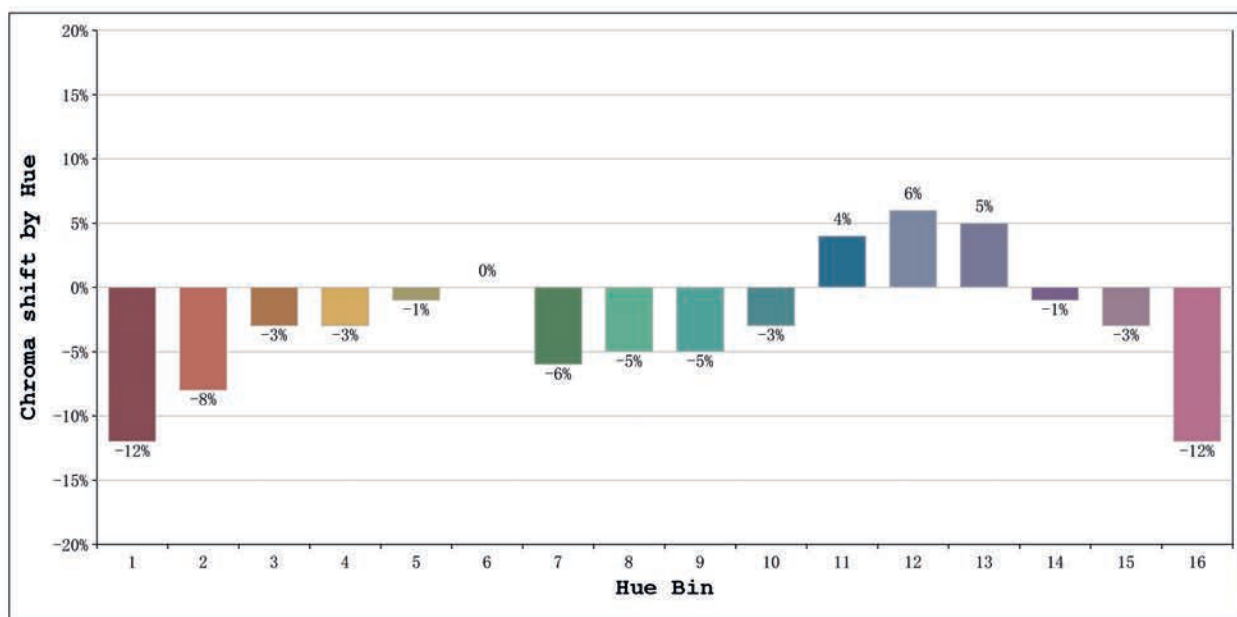
Model:Ecoled Altea 2700k  
 Tester:Sergio Carneros  
 Temperature:25Deg  
 Manufacturer:Luz Negra

Number: 31.225  
 Date:2025-07-24 14:10:15  
 Humidity:50%  
 Remarks:100cm de tira flexible



Model:Ecoled Altea 2700k  
 Tester:Sergio Carneros  
 Temperature:25Deg  
 Manufacturer:Luz Negra

Number: 31.225  
 Date:2025-07-24 14:10:15  
 Humidity:50%  
 Remarks:100cm de tira flexible



			Graphic shift(%)	
Hue Bin	Hue Angle	Rf	Chroma	Hue
1	0.0° - 22.5°	72	-12	2
2	22.5° - 45.0°	77	-8	8
3	45.0° - 67.5°	76	-3	10
4	67.5° - 90.0°	89	-3	3
5	90.0° - 112.5°	93	-1	2
6	112.5° - 135.0°	92	0	0
7	135.0° - 157.5°	85	-6	-3
8	157.5° - 180.0°	88	-5	2
9	180.0° - 202.5°	82	-5	7
10	202.5° - 225.0°	79	-3	11
11	225.0° - 247.5°	82	4	10
12	247.5° - 270.0°	84	6	2
13	270.0° - 292.5°	86	5	-10
14	292.5° - 315.0°	58	-1	-24
15	315.0° - 337.5°	81	-3	-10
16	337.5° - 360.0°	69	-12	-11

Model:Ecoled Altea 2700k  
 Tester:Sergio Carneros  
 Temperature:25Deg  
 Manufacturer:Luz Negra

Number: 31.225  
 Date:2025-07-24 14:10:15  
 Humidity:50%  
 Remarks:100cm de tira flexible